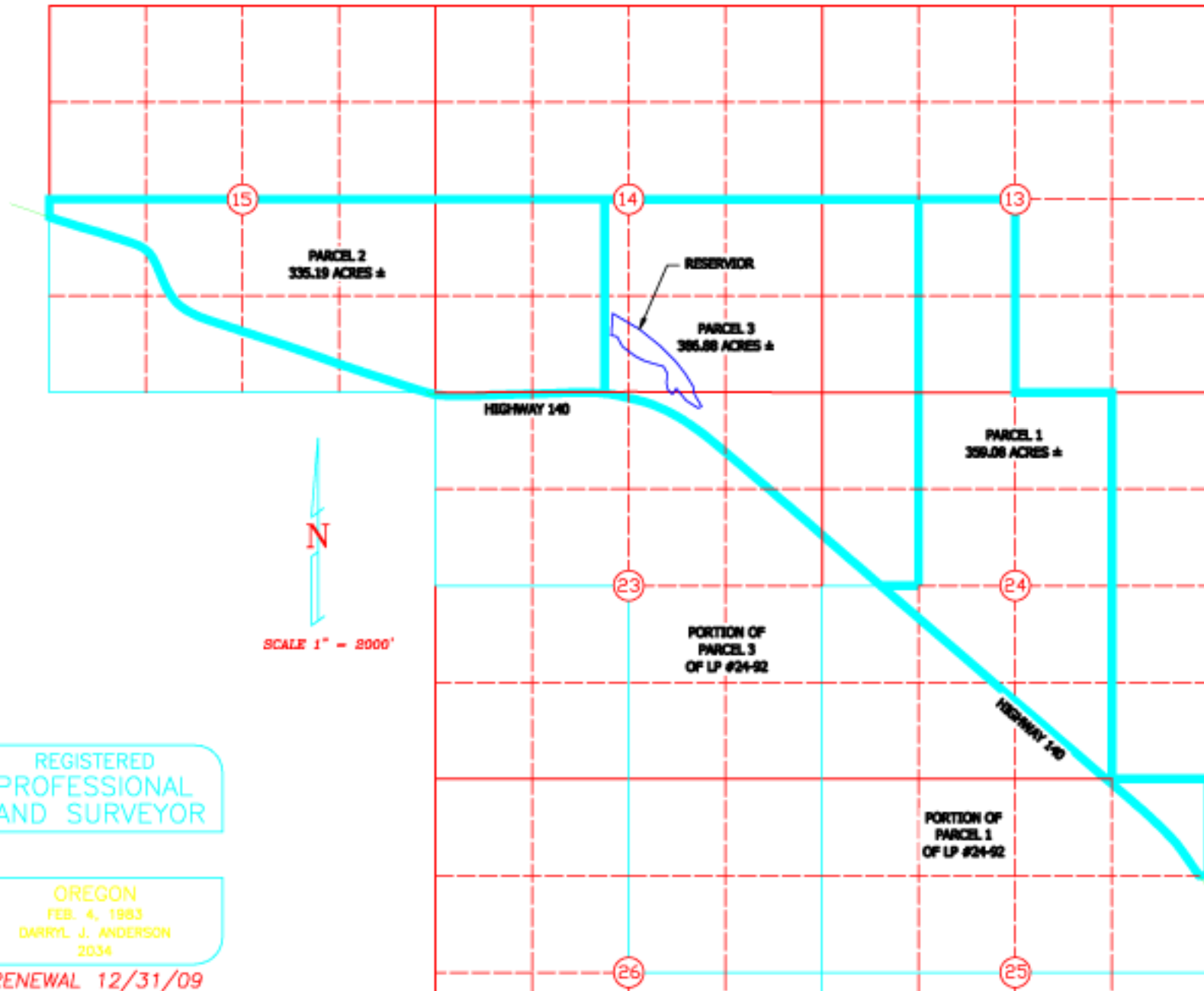


PROPOSED PARCELS 1, 2 AND 3
T37S, R15E, W.M. KLAMATH COUNTY, OREGON



ANDERSON ENGINEERING
AND SURVEYING, INC.

P.O. BOX 28
LAKEVIEW, OREGON 97630
(541) 947-4607
FAX 947-2321



PROPOSED PARCELS 1, 2, AND 3
EXHIBIT 'B'
FOR MARK SPITSBERGEN
KLAMATH COUNTY, OREGON

DATE: 12/18/08
SCALE: 1"=2000'
JOB: 2008-144
DWG. BY: R.C.
FILE: 2008-144
SHEET 2 OF 2

REGISTERED
PROFESSIONAL
LAND SURVEYOR

OREGON
FEB. 4, 1983
DARRYL J. ANDERSON
2034

RENEWAL 12/31/09